



The Everyday Apron



Materials:

1 yd. (7-10" wide) decorative lace

1/2 yd. (48" wide) polished cotton

2 1/4 yds. bias tape (1 1/4 yard each piece)

The Everyday

pattern by Neighbor

Fold fabric in half and put fold again

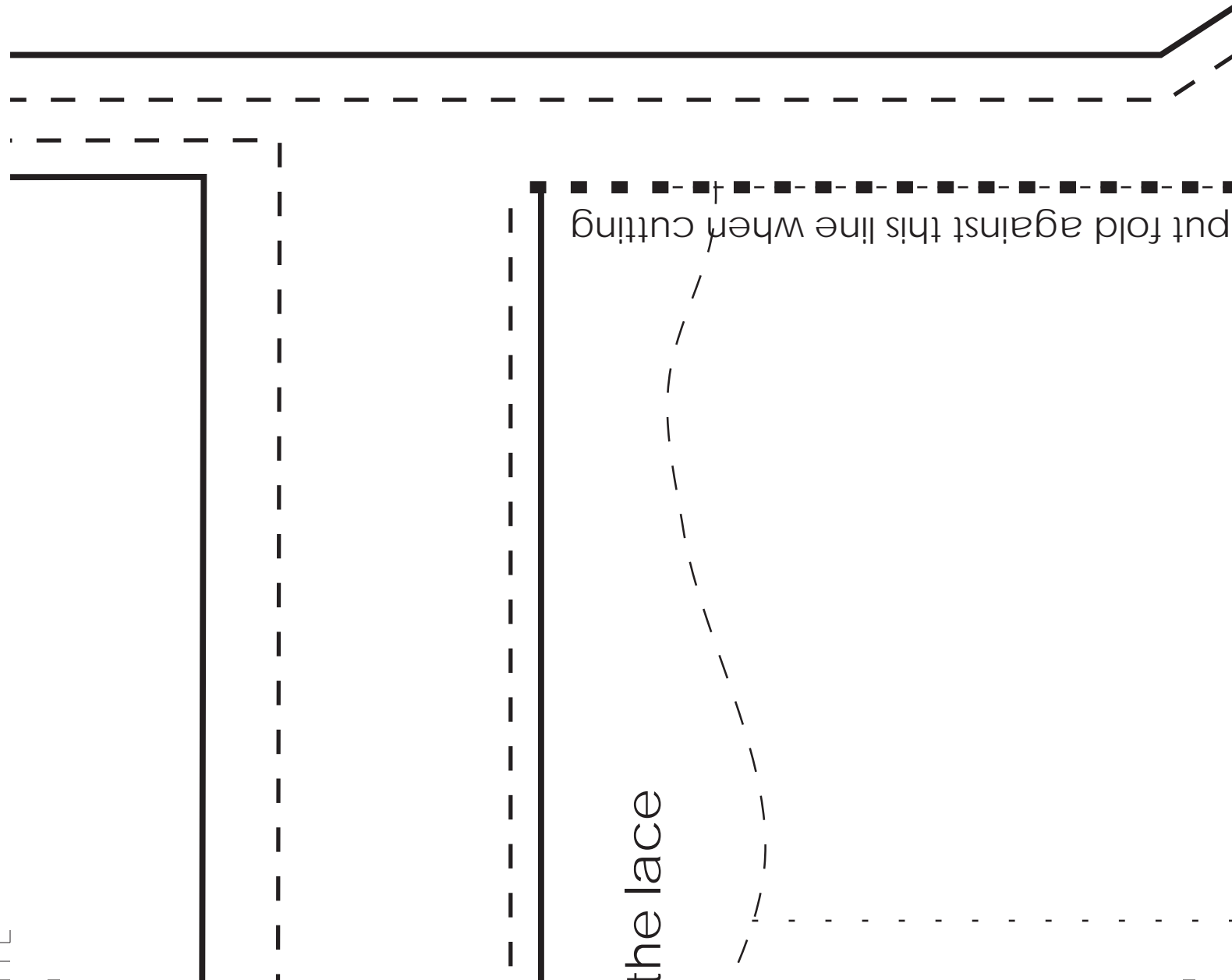
Apron Ties
cut 2

Apron

ay Apron

oorhood Fruit

nst this line when cutting

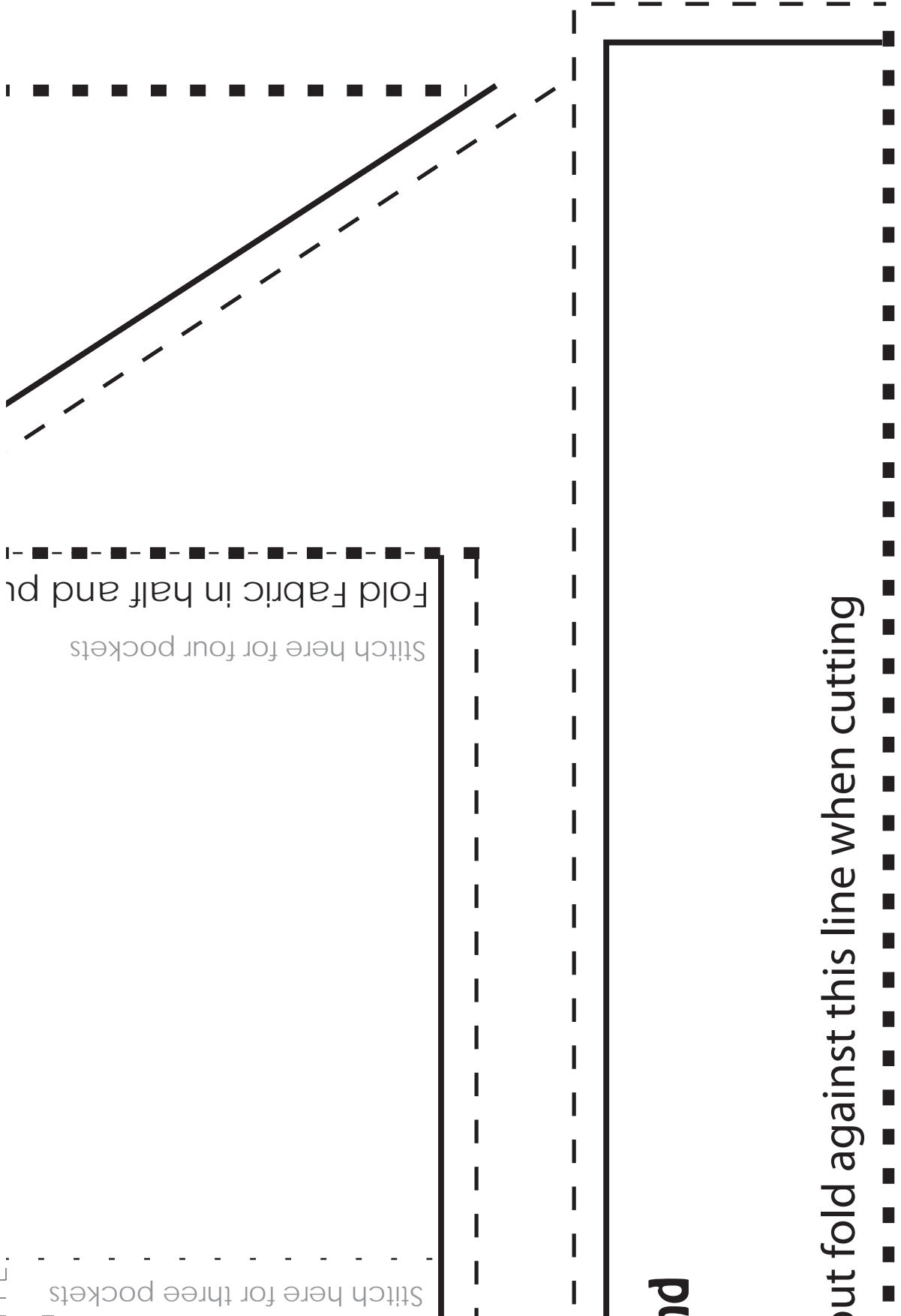


put fold against this line when cutting

the lace

Stitch here for three pockets

Stitch here for four pockets
Fold Fabric in half and pr



id

out fold against this line when cutting

1/2 yd. (48" wide) polished cotton
2 1/4 yds. bias tape (1 4 yard package)
thread

Directions:

1. Tape the printouts together and cut out all the pattern pieces.
2. Pin the pattern pieces to the fabric. (Note: all pieces require that the fabric be folded in half and the dark dotted line placed against the fold).
3. Cut out fabric pieces, cutting along dotted line. You should end up with 5 pieces: 1 apron front, 1 pocket, 1 waistband and 2 ties.
4. Iron the selvage on the waistband piece inward. Fold piece in half and iron flat.
5. Clip the corners on the ties and then iron in the selvage on the ties on all sides, except the side attaching it to the waistband.
6. Iron the selvage for the bottom of the pocket inward. Pin the pocket piece to the apron piece and sew together (straight stitch).
7. Sew the straight lines for the pockets down (lines for 3 or 4 pockets shown on pattern piece). Pin the sides of the pocket to the apron.
8. Pin the bias tape onto the entire edge of apron, encasing the pocket fabric and apron fabric. Sew, using a straight stitch.
8. Sew the ties, with the selvage on the inside, using a straight stitch. For a more decorative effect, use the bias tape to edge the ties.
9. Gather the top of the apron: set your sewing machine on the longest stitch length and sew one row of straight stitches. Gently pull the thread on one side to cause the fabric to pucker, and work the ruffle down the thread. You want to cause the width of the apron to match the waistband.
10. Pin the waistband around the puckered top of the apron, and sew using a straight stitch.
11. Poke the ties into the sides of the waistband (pinch them), and sew together. You're done!

Pattern by



visit us online at NeighborhoodFruit.com

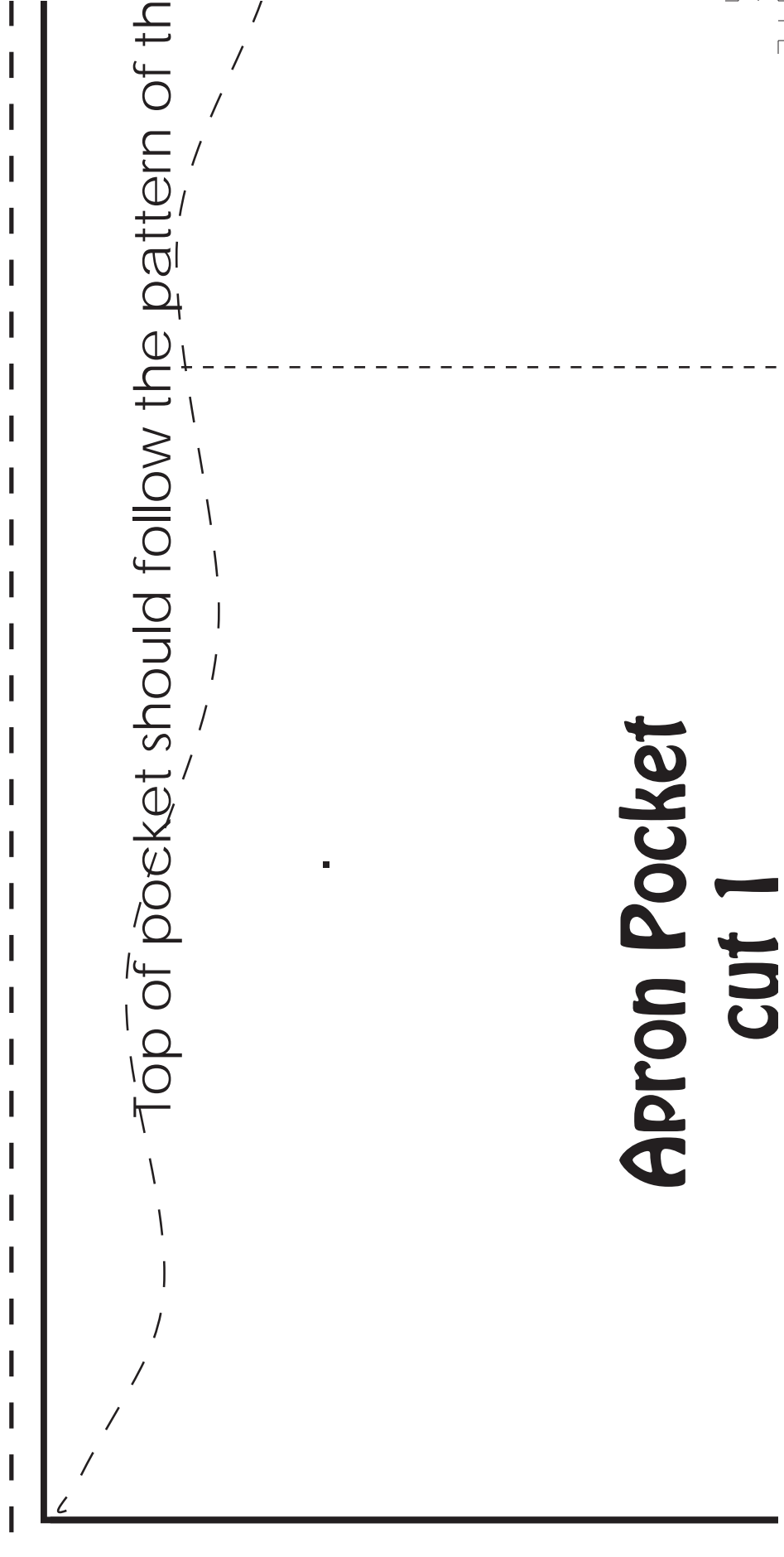
Fold Fabric in half and put

ron Front cut 1

t fold against this line when cutting



9

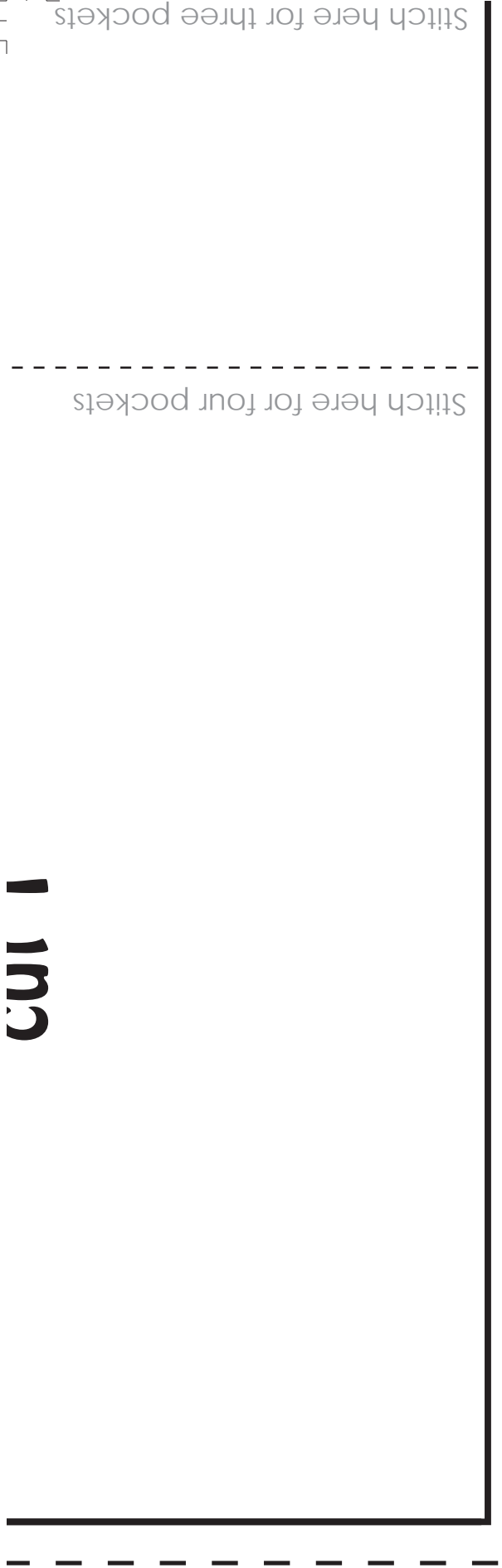


Top of pocket should follow the pattern of th

Apron Pocket cut 1

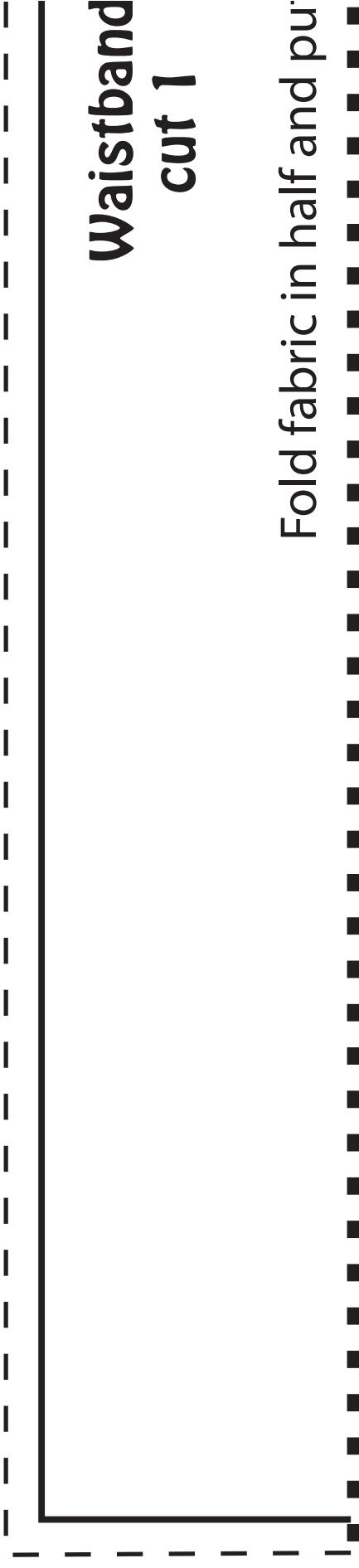
Stitch here for three pockets

Stitch here for four pockets



cut 1

**Waistband
cut 1**



Fold fabric in half and pu

